

ALBANY INTERNATIONAL AIRPORT

TOWN OF COLONIE
 COUNTY OF ALBANY
 STATE OF NEW YORK

AIRPORT LAYOUT PLAN

MONTH 202X

FEDERAL AVIATION ADMINISTRATION

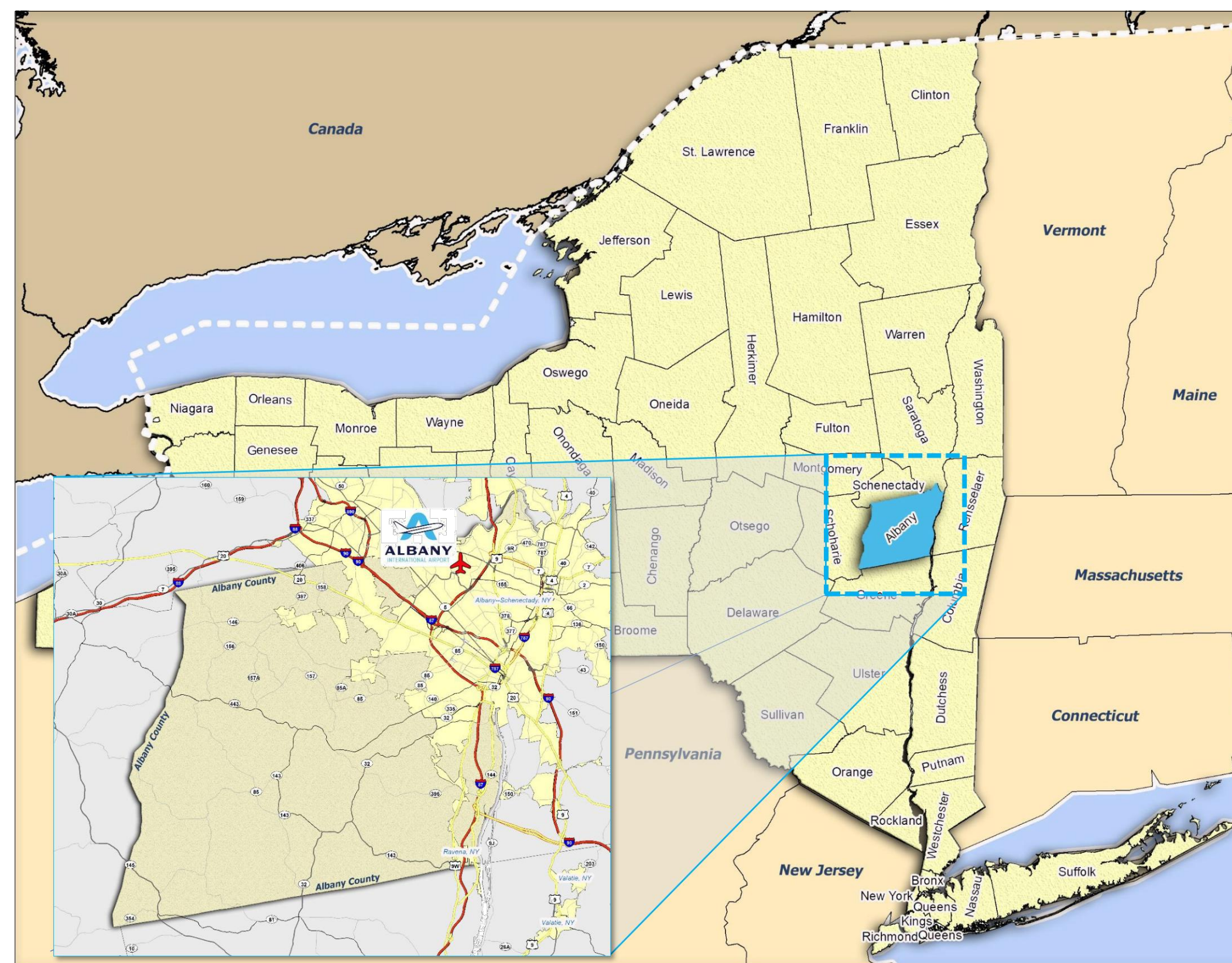
NYADO MANAGER: EVELYN MARTINEZ

NEW YORK STATE DEPT. OF TRANSPORTATION

COMMISSIONER: MARIE THERESE DOMINGUEZ

AVIATION BUREAU DIRECTOR: LOWELL E. LINGO

REGIONAL DIRECTOR: PATRICK BARNES, P. E.



LOCATION MAP

DRAFT

Sheet Index	
Sheet Number	Sheet Title
1	TITLE SHEET
2	AIRPORT DATA SHEET SUMMARY
3	EXISTING AIRPORT LAYOUT PLAN
4	FUTURE AIRPORT LAYOUT PLAN
5	TERMINAL AREA PLAN
6	EXHIBIT A
7	EXHIBIT A - TABLE 1
8	EXHIBIT A - TABLE 2



ALBANY COUNTY AIRPORT AUTHORITY

CHAIRMAN: SAMUEL A. FRESINA

CHIEF EXECUTIVE OFFICER: PHILIP F. CALDERONE, ESQ.

FEDERAL AVIATION ADMINISTRATION

APPROVED _____ DATE _____
Name
TITLE

ALBANY COUNTY AIRPORT AUTHORITY

APPROVED _____ DATE _____
Name
TITLE

NEW YORK STATE DEPT. OF TRANSPORTATION

APPROVED _____ DATE _____
Name
TITLE

NO	DATE	REVISION	BY	CHK	APPR.	NO	DATE	REVISION	BY	CHK	APPR.

CHA
 CHA Consulting, Inc.
 111 Winners Circle
 Albany, New York 12205
 (518)-453-4500
 www.chaconsulting.com

PROJECT NAME AIRPORT LAYOUT PLAN	DRAFT	JOB NO. 61207	DATE XX 2022	DRAWING NO.
SHEET TITLE TITLE SHEET		FILE NAME ALP-ALP-TITLE	REV. NO.	C1
DRAWN BY		REVIEWED BY		SCALE AS SHOWN
SHEET 1		OF 35		

File: V:\PROJECTS\NYAVAS\041007\000\04_05\04\DRAWINGS\01_SHEETS\ALP-ALP-TITLE.DWG
 Scale: 0/21/2023 4:50:09 PM
 Plotter: 9/28/2023 4:22:38 PM
 Current User: Admin
 User: Admin
 User: Admin
 User: Admin

AIRPORT DATA			
ALBANY INTERNATIONAL AIRPORT 737 ALBANY SHAKER ROAD ALBANY, NY 12211 Albany County			
ITEM	EXISTING	FUTURE	
AIRPORT OWNER	ALBANY COUNTY AIRPORT AUTHORITY		
STATE SERVICE LEVEL	PRIMARY		
NPIAS SERVICE LEVEL	COMMERCIAL SMALL HUB		
AIRPORT REFERENCE CODE	C-IV		
MEAN MAXIMUM TEMPERATURE OF HOTTEST MONTH (NOAA)	XX		
AIRPORT ELEVATION (MSL) NAVD 88 STANDARDS	285'	285'	
MAGNETIC DECLINATION	NOAA National Centers for Environmental Information (NCEI) 2019-2024		
AIRPORT REFERENCE POINT NAD 83 STANDARDS	LAT 2 LON 2	LAT 2 LON 2	LAT 2 LON 2
AIRPORT NAVIGATIONAL AIDS	PAPI-4, ILS, DME, LOC, VOR, RNAV-(GPS)		
MISCELLANEOUS FACILITIES	WIND CONES, VOR, BEACON, CONTROL TOWER		

MODIFICATIONS TO FAA DESIGN STANDARDS			
APPROVAL DATE	AIRSPACE CASE NO.	MODIFIED STANDARD	DESCRIPTION

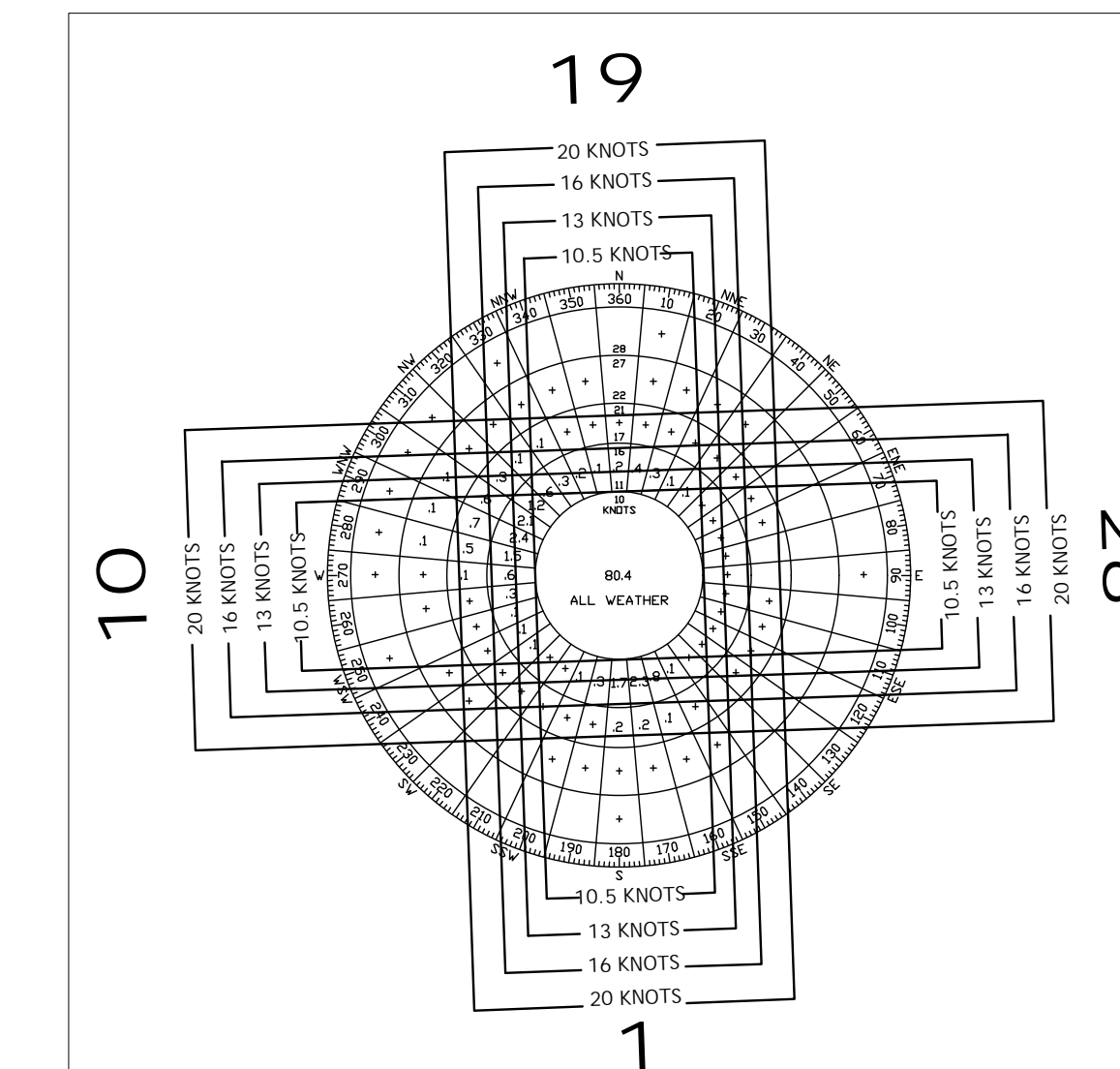
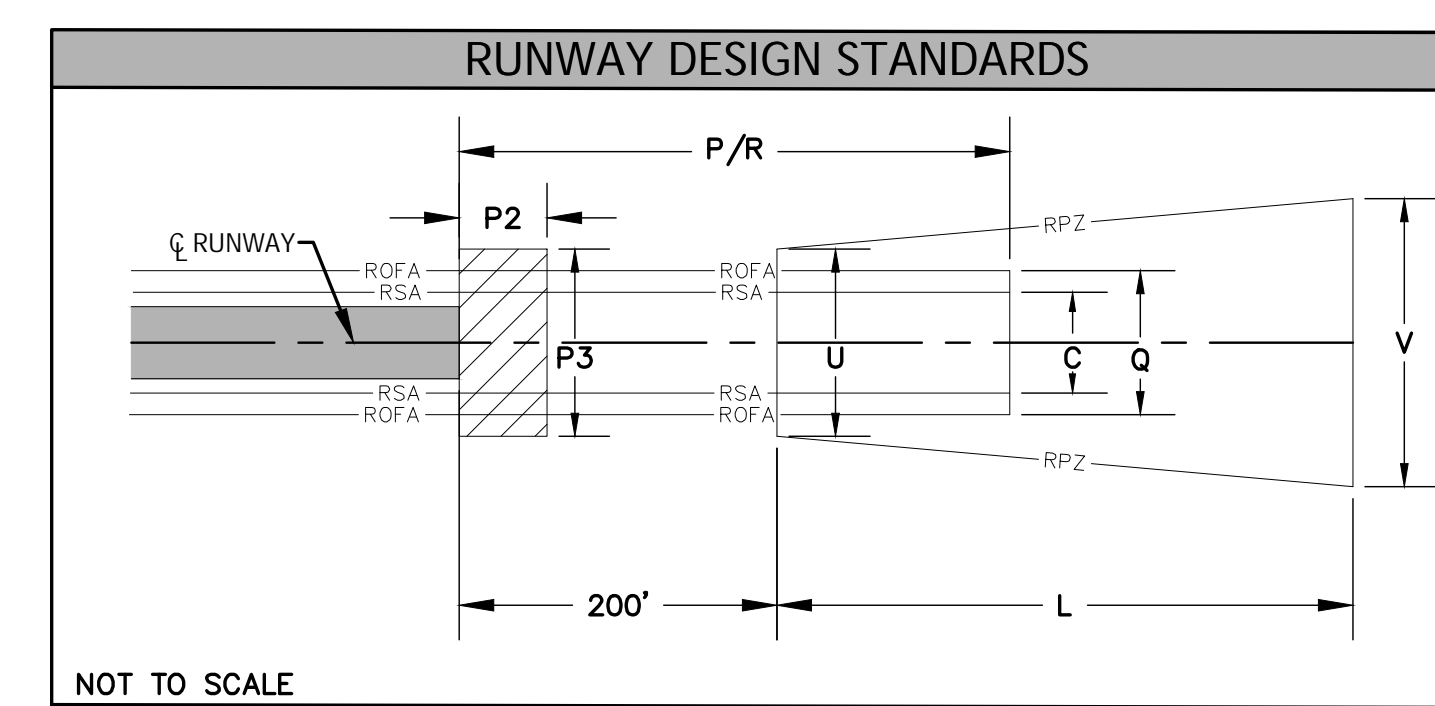
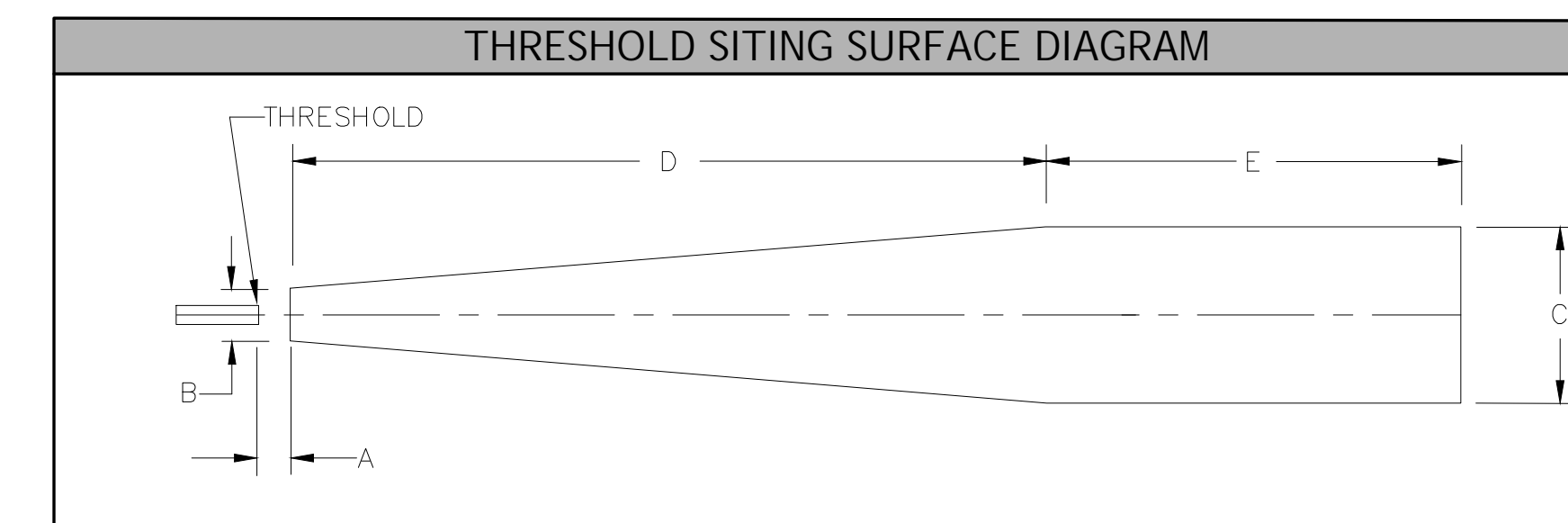
DESCRIPTION	RUNWAY 1-19				RUNWAY 10-28				
	EXISTING		FUTURE		EXISTING		FUTURE		
	1	19	1	19	10	28	10	28	
RUNWAY LENGTH	8,500 FT.		8,500 FT.		7,200 FT.		7,200 FT.		
RUNWAY WIDTH	150 FT.		150 FT.		150 FT.		150 FT.		
PAVEMENT TYPE // SURFACE TYPE	ASPHALT // GROOVED		ASPHALT // GROOVED		ASPHALT // GROOVED		ASPHALT // GROOVED		
PAVEMENT CONDITION	GOOD		GOOD		GOOD		GOOD		
PAVEMENT CONDITION NUMBER	70		70		67		67		
PAVEMENT STRENGTH (SINGLE)	140000		140000		140000		140000		
PAVEMENT STRENGTH (DUAL)	200000		200000		200000		200000		
PAVEMENT STRENGTH (DOUBLE TANDEM)	400000		400000		400000		400000		
EFFECTIVE RUNWAY GRADIENT	0.15%		0.15%		0.22%		0.22%		
MAXIMUM RUNWAY GRADIENT									
APPROACH TYPE	PRECISION		PRECISION		NON-PRECISION		NON-PRECISION		
APPROACH VISIBILITY MINIMUM	< 1/4 MILE		1/2 MILE		1 MILE		1 3/4 MILE		
RUNWAY CATEGORY (14 CFR PART 77)	PRECISION		NON-PRECISION		NON-PRECISION		NON-PRECISION		
APPROACH SLOPE (14 CFR PART 77)	50:1		50:1		34:1		34:1		
DESIGN AIRCRAFT									
RUNWAY DESIGN CODE (RDC)	C-IV-1200		C-IV-2400		C-IV-5000		C-IV-5000		
APPROACH DESIGN CODE (APRC)	D / V / 2400 D / V / 1600		D / V / 2400 D / V / 2400		D / V / 5000 D / V / 5000		D / V / 5000 D / V / 5000		
DEPARTURE RUNWAY REFERENCE CODE (DPRC)	D / V D / V		D / V D / V		D / V D / V		D / V D / V		
DEPARTURE RUNWAY SURFACE	YES		YES		YES		YES		
THRESHOLD SITING SURFACE	SEE TSS TABLE		SEE TSS TABLE		SEE TSS TABLE		SEE TSS TABLE		
TOUCHDOWN ZONE ELEVATION	284 FT.		279 FT.		278 FT.		285 FT.		
HORIZONTAL / VERTICAL DATUM	NAD 83 / NAVD 88		NAD 83 / NAVD 88		NAD 83 / NAVD 88		NAD 83 / NAVD 88		
AERONAUTICAL SURVEY	VGS		VGS		VGS		VGS		
RUNWAY MARKINGS	PRECISION		PRECISION		NON-PRECISION		NON-PRECISION		
RUNWAY LIGHTING	HIRL		HIRL		MIRL		MIRL		
APPROACH LIGHTING	MALSR		MALSR		NONE		NONE		
INSTRUMENT & NAVIGATIONAL AIDS	ILS/DME/RNAV		RNAV_VOR		ILS/DME/RNAV		RNAV_VOR		
DISPLACED THRESHOLD COORDINATES & ELEVATIONS	LATITUDE	N/A		N/A		N/A		N/A	
	LONGITUDE	N/A		N/A		N/A		N/A	
	DISTANCE	N/A		N/A		N/A		N/A	
RUNWAY END COORDINATES & ELEVATIONS	LATITUDE	42°44'13.87"N		42°45'37.71"N		42°44'56.94"N		42°44'59.27"N	
	LONGITUDE	73°48'15.32"W		73°48'18.99"W		73°48'43.53"W		73°47'07.09"W	
	ELEVATION	284 FT.		279 FT.		276 FT.		276 FT.	
DECLARED DISTANCES	TORA	8,500 FT.		8,500 FT.		7,200 FT.		7,200 FT.	
	TODA	8,500 FT.		8,500 FT.		7,200 FT.		7,200 FT.	
	ASDA	8,500 FT.		8,500 FT.		6,780 FT.		6,780 FT.	
	LDA	8,500 FT.		8,500 FT.		6,780 FT.		6,007 FT.	
	CLEARWAY	NONE		NONE		NONE		NONE	
STOPWAY	NONE		NONE		NONE		NONE		

TAXIWAY DATA										
TAXIWAY NAME	TAXIWAY LIGHTING		TAXIWAY DESIGN GROUP		TAXIWAY WIDTH		TAXIWAY SAFETY AREA		TAXIWAY OBJECT FREE AREA	
	EXISTING	FUTURE	EXISTING	FUTURE	EXISTING	FUTURE	EXISTING	FUTURE	EXISTING	FUTURE
A	A		5	5	75'	171'	25'	25'	25'	25'
B	B		5	5	95'	171'	25'	25'	25'	25'
C	C		5	5	75'	171'	25'	25'	25'	25'
D	D		5	5	75'	171'	25'	25'	25'	25'
E	E		5	5	90'	171'	25'	25'	25'	25'
F	F		5	5	90'	171'	25'	25'	25'	25'
G	G		5	5	75'	171'	25'	25'	25'	25'
H	H		5	5	80'	171'	25'	25'	25'	25'
J	J		5	5	75'	171'	25'	25'	25'	25'
K	K		5	5	80'	171'	25'	25'	25'	25'
M	M		5	5	VARIES	171'	25'	25'	25'	25'
N	N		5	5	85'	171'	25'	25'	25'	25'
P	P		5	5	50'	171'	25'	25'	25'	25'
Q	Q		5	5	80'	171'	25'	25'	25'	25'
R	R		5	5	120'	171'	25'	25'	25'	25'

DESCRIPTION	RUNWAY SAFETY AREA DATA							
	RUNWAY 1-19				RUNWAY 10-28			
	EXISTING		FUTURE		EXISTING		FUTURE	
RUNWAY SAFETY AREA (RSA)	(R) LENGTH BEYOND RUNWAY END	1,000 FT.	1,000 FT.	1,000 FT.	1,000 FT.	1,000 FT.	580 FT.	1,000 FT.
	(P) LENGTH PRIOR TO RUNWAY THRESHOLD	600 FT.	600 FT.	600 FT.	600 FT.	600 FT.	600 FT.	600 FT.
	(C) WIDTH	500 FT.	500 FT.	500 FT.	500 FT.	500 FT.	500 FT.	500 FT.
RUNWAY OBJECT FREE AREA (ROFA)	(R) LENGTH BEYOND RUNWAY END	1,000 FT.	1,000 FT.	1,000 FT.	1,000 FT.	1,000 FT.	580 FT.	1,000 FT.
	(P) LENGTH PRIOR TO RUNWAY THRESHOLD	600 FT.	600 FT.	600 FT.	600 FT.	600 FT.	600 FT.	600 FT.
	(C) WIDTH	800 FT.	800 FT.	800 FT.	800 FT.	800 FT.	800 FT.	800 FT.
RUNWAY PROTECTION ZONE (RPZ)	(L) LENGTH	2,500 FT.	2,500 FT.	2,500 FT.	2,500 FT.	1,700 FT.	1,700 FT.	1,700 FT.
	(U) INNER WIDTH	1,000 FT.	1,000 FT.	1,000 FT.	1,000 FT.	500 FT.	500 FT.	500 FT.
	(V) OUTER WIDTH	1,750 FT.	1,750 FT.	1,750 FT.	1,750 FT.	1,010 FT.	1,010 FT.	1,010 FT.
RUNWAY OBSTACLE FREE ZONE (ROFZ)	LENGTH	8,900 FT.	8,900 FT.	8,900 FT.	8,900 FT.	7,400 FT.	7,400 FT.	7,400 FT.
	WIDTH	400 FT.	400 FT.	400 FT.	400 FT.	400 FT.	400 FT.	400 FT.
PRECISION OBSTACLE FREE ZONE (POFZ)	LENGTH	200 FT.	200 FT.	200 FT.	200 FT.	N/A	N/A	N/A
	WIDTH	800 FT.	800 FT.	800 FT.	800 FT.	N/A	N/A	N/A

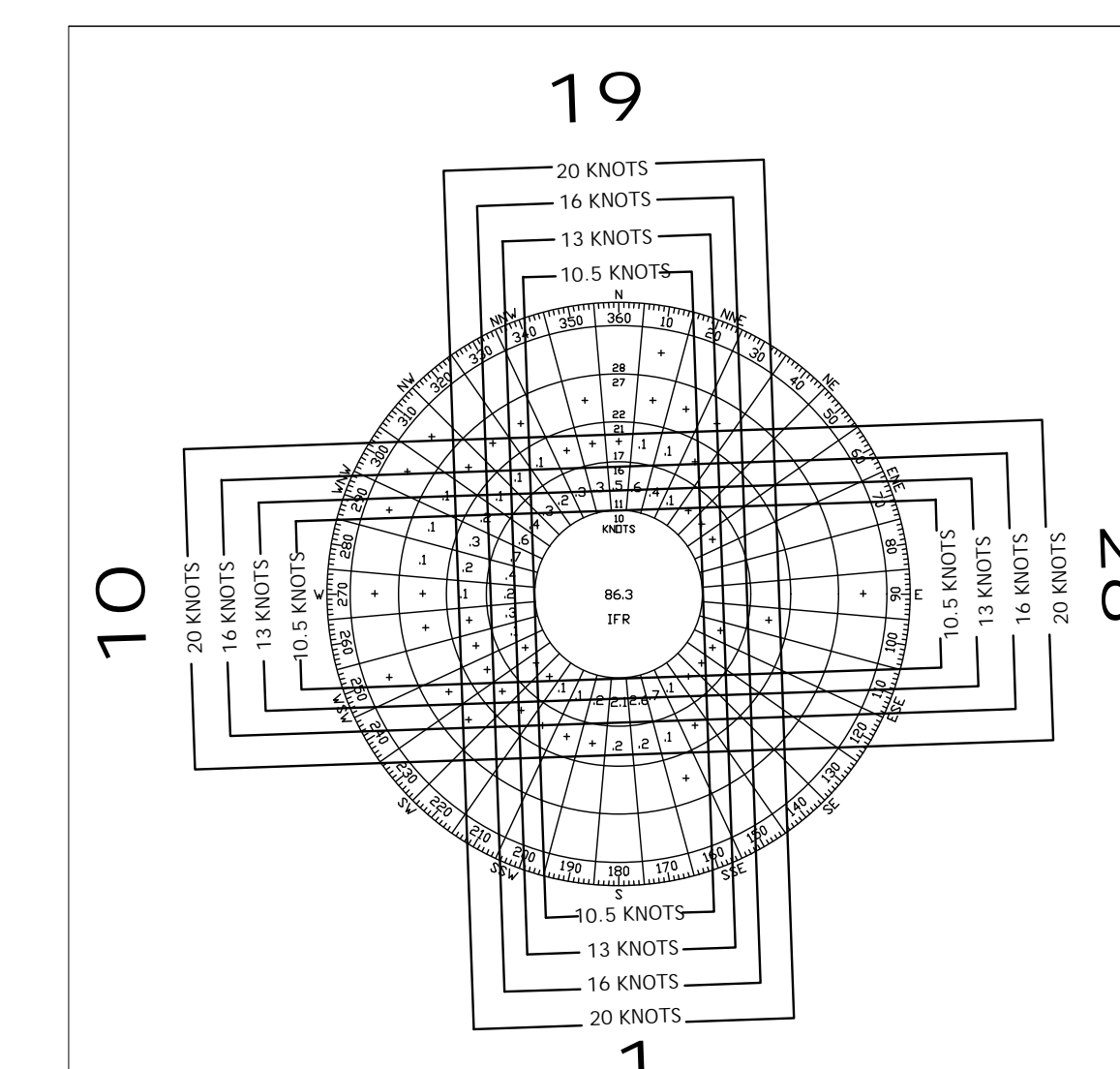
APPROACH DIMENSIONS	RUNWAY 1-19								RUNWAY 10-28							
	EXISTING				FUTURE				EXISTING				FUTURE			
	1	1'	19	19'	1	1'	19	19'	10	28	28'	10	10'	28	28'	
A	200 FT.	N/A	200 FT.	N/A	200 FT.	N/A	200 FT.	N/A	200 FT.	N/A	200 FT.	N/A	200 FT.	N/A	200 FT.	N/A
B	800 FT.	800 FT.	800 FT.	800 FT.	800 FT.	800 FT.	800 FT.	800 FT.	400 FT.	400 FT.	400 FT.	400 FT.	400 FT.	400 FT.	400 FT.	400 FT.
C	3,400 FT.	1,520 FT.	3,400 FT.	1,520 FT.	3,400 FT.	1,520 FT.	3,400 FT.	1,520 FT.	3,400 FT.	1,520 FT.	3,400 FT.	1,520 FT.	3,400 FT.	1,520 FT.	3,400 FT.	1,520 FT.
D	10,000 FT.	10,000 FT.	10,000 FT.	10,000 FT.	10,000 FT.	10,000 FT.	10,000 FT.	10,000 FT.	10,000 FT.	10,000 FT.	10,000 FT.	10,000 FT.	10,000 FT.	10,000 FT.	10,000 FT.	10,000 FT.
E	N/A	N/A	N/A	N/A	N/A	N/A	N/A	N/A	N/A	N/A	N/A	N/A	N/A	N/A	N/A	N/A
OCS # // SLOPE	5//34:1	6//30:1	5//34:1	6//30:1	5//34:1	6//30:1	5//34:1	6//30:1	4//20:1	6//30:1	4//20:1	6//30:1	4//20:1	6//30:1	4//20:1	6//30:1
OCS TYPE 7 DIMENSIONS	EXISTING				FUTURE				EXISTING				FUTURE			
	1	19	1	19	10	28	10	28	10	28	10	28	10	28	10	28
	150 FT.	150 FT.	150 FT.	150 FT.	150 FT.	150 FT.	150 FT.	150 FT.	150 FT.	150 FT.	150 FT.	150 FT.	150 FT.	150 FT.	150 FT.	150 FT.
B	---	---	---	---	---	---	---	---	---	---	---	---	---	---	---	---
C	7,512 FT.	7,512 FT.	7,512 FT.	7,512 FT.	7,512 FT.	7,512 FT.	7,512 FT.	7,512 FT.	7,512 FT.	7,512 FT.	7,512 FT.	7,512 FT.	7,512 FT.	7,512 FT.	7,512 FT.	7,512 FT.
D	12,152 FT.	12,152 FT.	12,152 FT.	12,152 FT.	12,152 FT.	12,152 FT.	12,152 FT.	12,152 FT.	12,152 FT.	12,152 FT.	12,152 FT.	12,152 FT.	12,152 FT.	12,152 FT.	12,152 FT.	12,152 FT.
E	6,160 FT.	6,160 FT.	6,160 FT.	6,160 FT.	6,160 FT.	6,160 FT.	6,160 FT.	6,160 FT.	6,160 FT.	6,160 FT.	6,160 FT.	6,160 FT.	6,160 FT.	6,160 FT.	6,160 FT.	6,160 FT.
SLOPE	40:1	40:1	40:1	40:1	40:1	40:1	40:1	40:1	40:1	40:1	40:1	40:1	40:1	40:1	40:1	40:1

*NOTE: FOR INSTRUMENT APPROACHES WITH VERTICAL GUIDANCE, TSS SURFACE P-1 IS REQUIRED IN ADDITION TO THE APPLICABLE APPROACH SURFACE ESTABLISHED WITHIN TABLE 3.2 OF ENGINEERING BRIEF 99
 **1500 FEET - 1500 FEET WIDTH
 ***500 FEET - 1500 FEET WIDTH



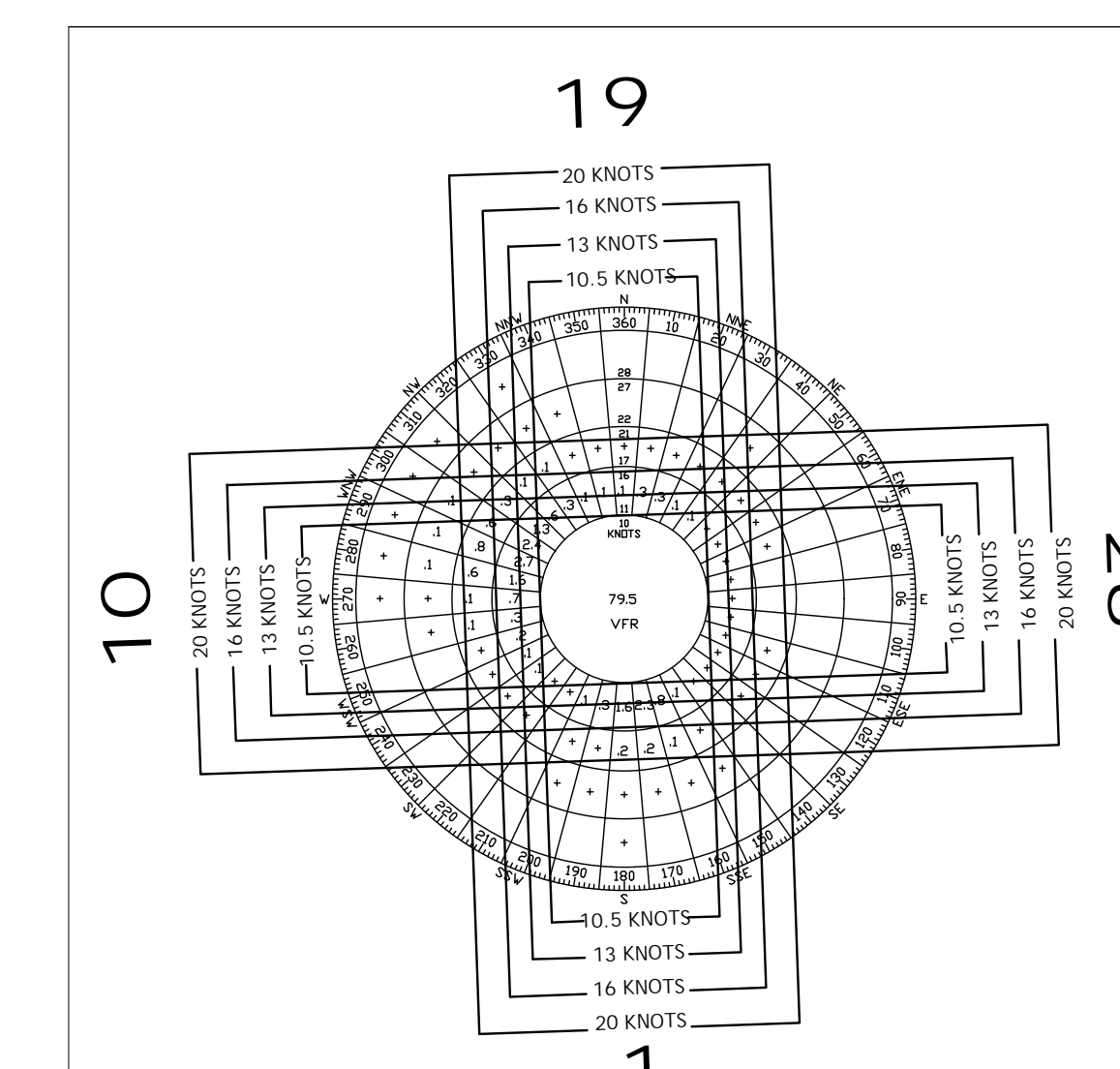
ALL WEATHER WIND COVERAGE				
RUNWAY	10.5 KNOTS	13 KNOTS	16 KNOTS	20 KNOTS
1-19	90.26%	94.16%	97.80%	99.50%
10-28	91.36%	95.02%	98.94%	99.82%
COMBINED	99.01%	99.78%	99.97%	100.00%

DATA SOURCE: NOAA National Climatic Center
 Asheville, NC
 Albany International Airport
 Albany, NY
 Station 725180
 132,494 Observations
 2010-2019



IFR WIND COVERAGE				
RUNWAY	10.5 KNOTS	13 KNOTS	16 KNOTS	20 KNOTS
1-19	96.20%	97.54%	98.84%	99.61%
10-28	90.42%	94.07%	98.64%	99.78%
COMBINED	99.36%	99.79%	99.94%	100.00%

DATA SOURCE: NOAA National Climatic Center
 Asheville, NC
 Albany International Airport
 Albany, NY
 Station 725180
 132,494 Observations
 2010-2019



VFR WIND COVERAGE				
RUNWAY	10.5 KNOTS	13 KNOTS	16 KNOTS	20 KNOTS
1-19	89.29%	93.59%	97.63%	99.48%
10-28	91.56%	95.20%	98.98%	99.83%
COMBINED	98.94%	99.73%	99.98%	100.00%

DATA SOURCE: NOAA National Climatic Center
 Asheville, NC
 Albany International Airport
 Albany, NY
 Station 725180
 132,494 Observations
 2010-2019

File: V:\PROJECTS\NYAVS\04072020\04_08_05\DRAWINGS\01_SHEETS\ALB-ALP-01A.DWG
 Date: 8/27/2023 11:28:31 AM
 Plot Date: 9/29/2023 4:24:20 PM
 Current User: Admin
 Color: User
 Scale: 8:00

NO	DATE	REVISION	BY	CHK	APPR	NO	DATE	REVISION	BY	CHK	APPR

CHA
 Consulting, Inc.
 III Winners Circle
 Albany, New York 12205
 (518)-453-4500
 www.chaconsulting.com



PROJECT NAME
 AIRPORT LAYOUT PLAN

SHEET TITLE
 AIRPORT DATA SHEET SUMMARY

DRAFT

JOB NO. 61207	DATE XX 2022	DRAWING NO.
FILE NAME ALP-01A.DWG	REV. NO.	
DESIGNED BY		
DRAWN BY		
REVIEWED BY		
SCALE AS SHOWN		

C4

Building No.	Description
100/101/102	Main Passenger Terminal
104/105	Passenger Parking Garage
106	Remuneration Building/Egress Canopy
107	Security Checkpoint
108	Triturator
109	FBO Offices
111	ARFF Facility
112	FBO Hangar
117	ACAA Offices
118	Administrative Building
119	Hangar
121	Water Meter Building
122	ACAA Building
133	Passenger Parking Garage
200	NY Police Facility
201	Hangar
202	Hangar
203	Hangar
204	Glycol Treatment Facility
210	Glycol Tank
211	Hangar
217	Fuel Farm
218	Ground Run-Up Enclosure (GRE)
219	Sand Storage Building
220	Storage Facility
221	Glycol Tank
222	Hangar
224	Fuel Farm Office
300	Air Cargo Facility
301	Airfield Maintenance Offices
302	Vehicle Maintenance Garage
303	Air Traffic Control Tower (ATCT) / TRACON Facility
304	NYS Police
305	Historic Building
400	T-Hangar A
401	T-Hangar B
402	T-Hangar C
403	T-Hangar D
406	ACAA Garage
405	ACAA Offices
407	ACAA Offices
410	Rental Car Offices
412	Rental Car Storage
413	NY Army National Guard Facility
414	NY Army National Guard Hangars
415	NY Army National Guard Hangars
416	NY Army National Guard Hangars
417	NY Army National Guard Hangars

LEGEND

- EX. BUILDING
- EX. RUNWAY PAVEMENT
- EX. RUNWAY SHOULDER PAVEMENT
- EX. TAXIWAY PAVEMENT
- EX. APRON PAVEMENT
- ELEVATION CONTOUR
- EXISTING GROUND SPOT ELEVATION
- AIRPORT FENCE (8' Chainlink w/1" Wire)
- WATER/DETENTION AREAS
- NAVAID CRITICAL AREAS
- RPZ - RUNWAY APPROACH PROTECTION ZONE
- RSA - RUNWAY SAFETY AREA
- ROFA - RUNWAY OBJECT FREE AREA
- OFZ - RUNWAY OBSTACLE FREE ZONE
- BRL - BUILDING RESTRICTION LINE
- RVZ - RUNWAY VISIBILITY ZONE
- 15A - EX. TAXIWAY SAFETY AREA
- 15FA - EX. TAXIWAY OBJECT FREE AREA
- EX. AIRPORT PROPERTY LINE
- AIRPORT REFERENCE POINT
- WIND CONE
- PACS OR SACS SURVEY MONUMENT
- FAR PART 77 APPROACH SURFACE
- THRESHOLD SITING SURFACE TYPE #4
- THRESHOLD SITING SURFACE TYPE #6
- EX. FACILITY DESIGNATION

NOTES

- TAXIWAY EDGE SAFETY MARGINS ARE NOT SHOWN DUE TO THE SCALE OF THIS PLAN SHEET. THIS INFORMATION HAS BEEN DEPICTED IN THE TAXIWAY DATA CHART ON THE AIRPORT DATA SHEET.

GLOSSARY

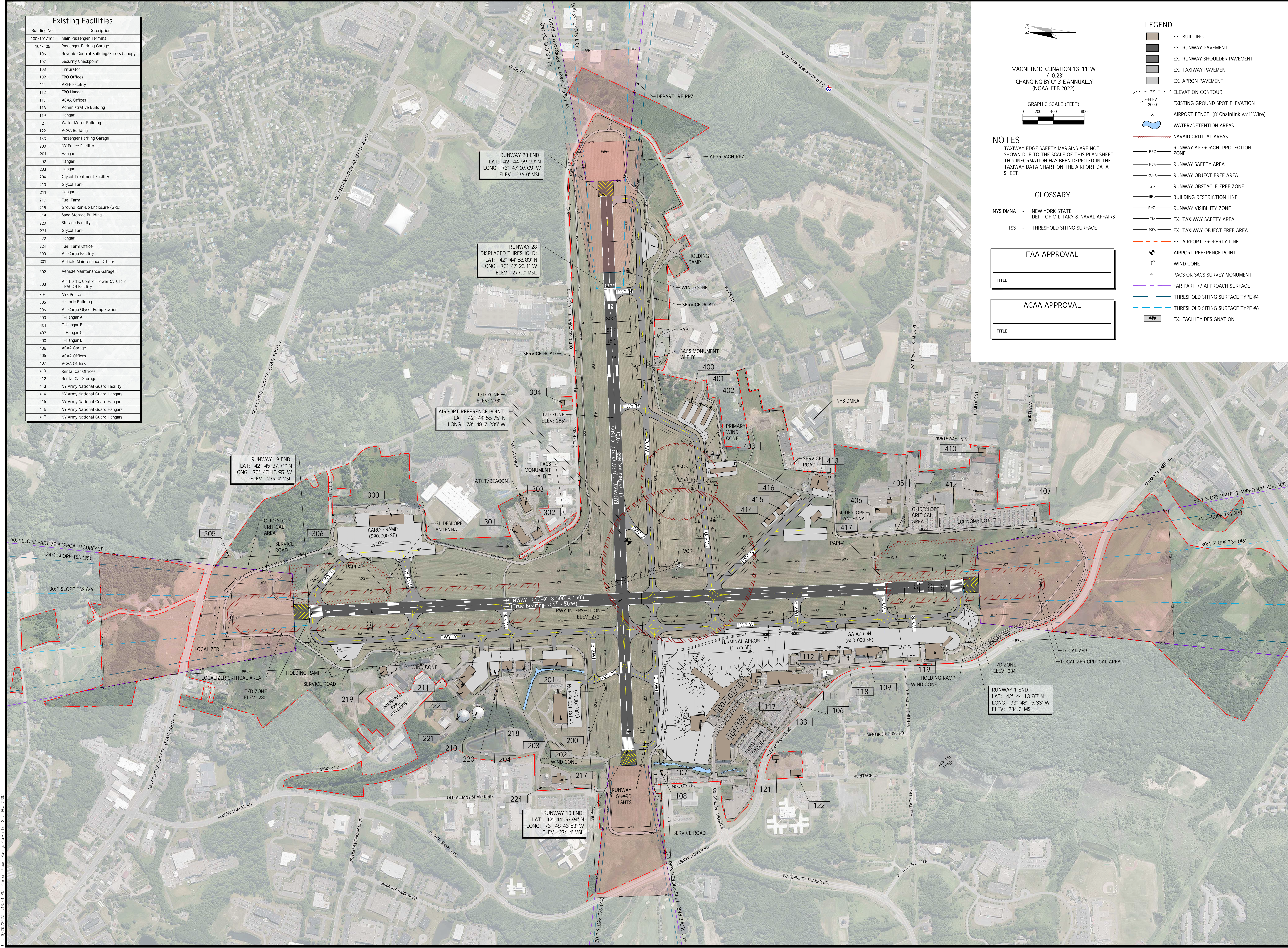
NYS DMNA - NEW YORK STATE DEPT OF MILITARY & NAVAL AFFAIRS
TSS - THRESHOLD SITING SURFACE

FAA APPROVAL

TITLE _____

ACAA APPROVAL

TITLE _____



File: V:\PROJECTS\NYAV\041007\0001_09_05\SIGAV\RAW\MS\01_SHEETS\ALB-ALP-EXISTING.DWG
 Sheet: 9/29/2023 4:27:04 PM Project: 9/29/2023 4:18:44 AM Current User: Kaitie_Cain_LTS@cha.com 5853

NO	DATE	REVISION	BY	CHK	APPR.	NO	DATE	REVISION	BY	CHK	APPR.

CHA Consulting, Inc.
 III Winners Circle
 Albany, New York 12205
 (518)-453-4500
 www.chaconsulting.com

ALBANY
 INTERNATIONAL AIRPORT

PROJECT NAME: AIRPORT LAYOUT PLAN
 SHEET TITLE: EXISTING AIRPORT LAYOUT PLAN

DRAFT

JOB NO. 61207	DATE XX 2022	DRAWING NO.
FILE NAME ALP-ALP-EXISTING	REV. NO.	
DESIGNED BY		
DRAWN BY		
REVIEWED BY		
SCALE AS SHOWN		
SHEET 3 OF 35		

Existing Facilities	
100/101/102	Main Passenger Terminal
104/105	Passenger Parking Garage
106	Revenue Control Building/Egress Canopy
107	Security Checkpoint
108	Triturator
111	ARFF Facility
112	FBO Hangar
117	ACAA Offices
118	Administrative Building
121	Water Meter Building
122	ACAA Building
133	Passenger Parking Garage

Proposed Facilities	
F1	Proposed Passenger Terminal Expansion
F2	Proposed Additional Passenger Parking Garage
F4	Proposed Fuel Farm Expansion

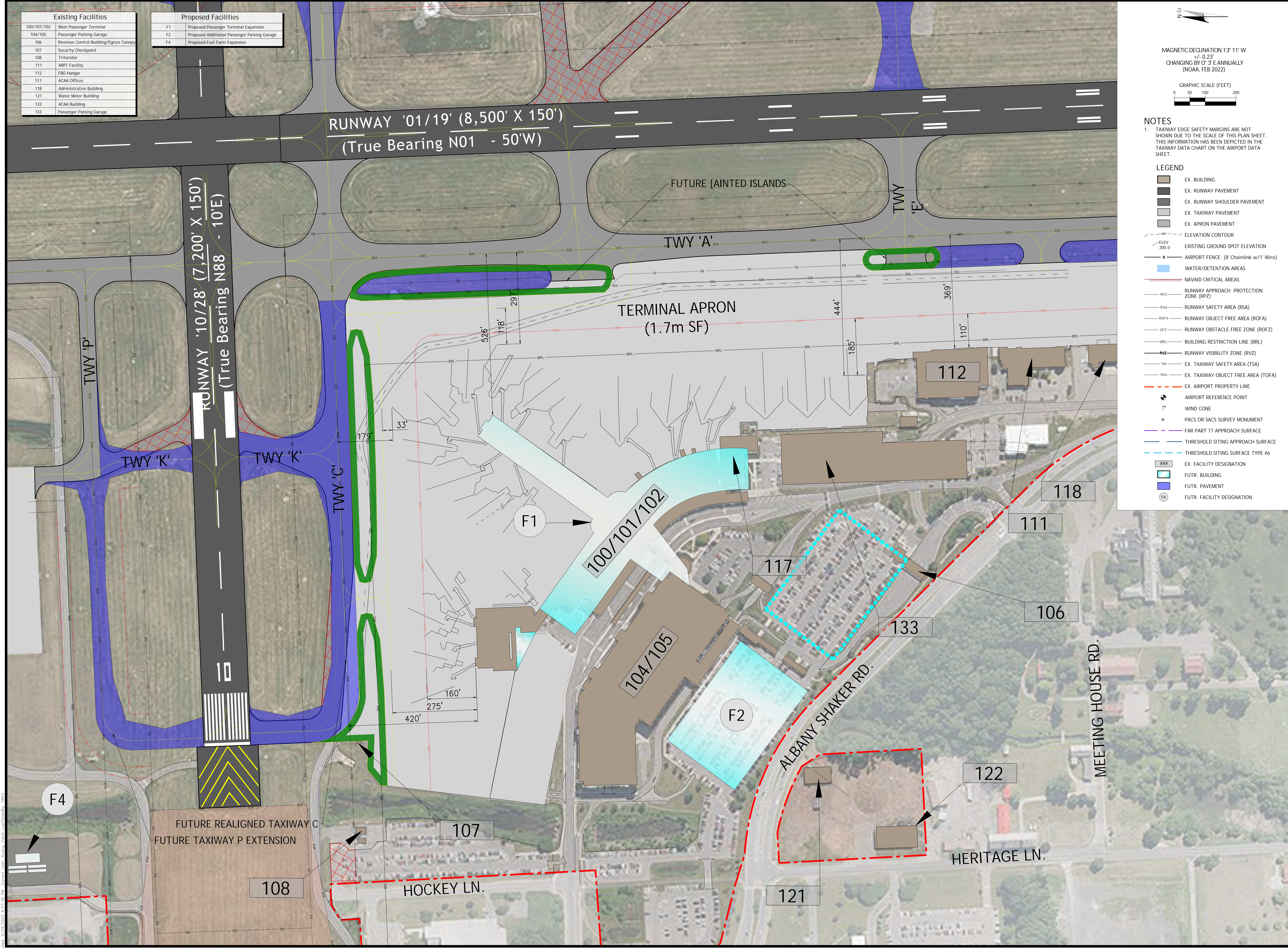
MAGNETIC DECLINATION 13° 11' W
 +/- 0.23"
 CHANGING BY 0° 3' E ANNUALLY
 (NOAA, FEB 2022)

GRAPHIC SCALE (FEET)
 0 50 100 200

NOTES
 1. TAXIWAY EDGE SAFETY MARGINS ARE NOT SHOWN DUE TO THE SCALE OF THIS PLAN SHEET. THIS INFORMATION HAS BEEN DEPICTED IN THE TAXIWAY DATA CHART ON THE AIRPORT DATA SHEET.

LEGEND

	EX. BUILDING
	EX. RUNWAY PAVEMENT
	EX. RUNWAY SHOULDER PAVEMENT
	EX. TAXIWAY PAVEMENT
	EX. APRON PAVEMENT
	ELEVATION CONTOUR
	ELEV 200.0
	AIRPORT FENCE (8' Chainlink w/1' Wire)
	WATER/DETENTION AREAS
	NAVAID CRITICAL AREAS
	RUNWAY APPROACH PROTECTION ZONE (RPZ)
	RUNWAY SAFETY AREA (RSA)
	RUNWAY OBJECT FREE AREA (ROFA)
	RUNWAY OBSTACLE FREE ZONE (ROFZ)
	BUILDING RESTRICTION LINE (BRL)
	RUNWAY VISIBILITY ZONE (RVZ)
	EX. TAXIWAY SAFETY AREA (TSA)
	EX. TAXIWAY OBJECT FREE AREA (TOFA)
	EX. AIRPORT PROPERTY LINE
	AIRPORT REFERENCE POINT
	WIND CONE
	PACS OR SACS SURVEY MONUMENT
	FAR PART 77 APPROACH SURFACE
	THRESHOLD SITING APPROACH SURFACE
	THRESHOLD SITING SURFACE TYPE #6
	EX. FACILITY DESIGNATION
	FUTR. BUILDING
	FUTR. PAVEMENT
	FUTR. FACILITY DESIGNATION



File: V:\PROJECTS\NY\010207\0001\09_DESIGN\DRAWINGS\10_TERMINAL\10_TERMINAL.DWG
 Sheet: 8/29/2023 4:02:25 PM Project: 9/29/2023 4:07:38 AM Current User: Admin_Cad/Cad/10_TERMINAL.DWG 5853

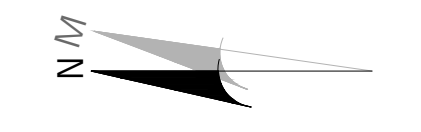
NO.	DATE	REVISION	BY	CHK.	APPR.	NO.	DATE	REVISION	BY	CHK.	APPR.

CHA Consulting, Inc.
 III Winners Circle
 Albany, New York 12205
 (518)-453-4500
 www.chaconsulting.com

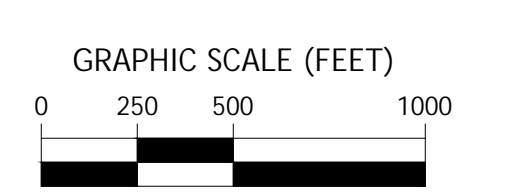
ALBANY
 INTERNATIONAL AIRPORT

PROJECT NAME: AIRPORT LAYOUT PLAN
 SHEET TITLE: TERMINAL AREA PLAN
DRAFT

JOB NO. 61207	DATE XX 2022	DRAWING NO.
FILE NAME: AIR-AP-TERMINAL	REV. NO.	
DESIGNED BY:		
DRAWN BY:		
REVIEWED BY:		
SCALE AS SHOWN		SHEET 5 OF 35



MAGNETIC DECLINATION 13° 11' W
 +/- 0.23'
 CHANGING BY 0° 3' E ANNUALLY
 (NOAA, FEB 2022)



LEGEND

- AIRPORT BUSINESS AREA
- CEMETERY
- COMMERCIAL OFFICE
- COMMERCIAL OFFICE RESIDENTIAL
- HIGHWAY COMMERCIAL OFFICE RESIDENTIAL
- INDUSTRIAL
- LAND CONSERVATION
- MULTI-FAMILY RESIDENTIAL
- NEIGHBORHOOD COMMERCIAL RESIDENTIAL
- OFFICE RESIDENTIAL
- PLANNED DEVELOPMENT DISTRICT
- SINGLE FAMILY RESIDENTIAL
- AIRPORT PROPERTY LINE
- 75 DNL NOISE CONTOUR (2026)
- 70 DNL NOISE CONTOUR (2026)
- 65 DNL NOISE CONTOUR (2026)

LIGHT OF THE WORLD CHRISTIAN CHURCH

FORTS FERRY ELEMENTARY SCHOOL

LIFE CHURCH

LATHAM COMMUNITY BAPTIST CHURCH

LIVING HOPE COMMUNITY CHURCH

CHRISTIAN BROTHERS ACADEMY

FOREST PARK ELEMENTARY SCHOOL

COMMUNITY REFORMED CHURCH

File: \\PROJECTS\ALB\ALP\041007000\04_05\DRAWINGS\01_SHEETS\ALP-ALP-LAND_USE.DWG
 Date: 9/28/2023 4:20:38 PM Plotter: HP DesignJet 5000 Series

NO.	DATE	REVISION	BY	CHK	APPV.	NO.	DATE	REVISION	BY	CHK	APPV.

CHA
 CHA Consulting, Inc.
 111 Winners Circle
 Albany, New York 12205
 (518)-453-4500
 www.chaconsulting.com

ALBANY
INTERNATIONAL AIRPORT

PROJECT NAME: AIRPORT LAYOUT PLAN
 SHEET TITLE: ALB-ALP-LAND_USE - AIRPORT LAND USE PLAN
DRAFT

JOB NO. 61207	SHEET XX 2022	DRAWING NO.
FILE NAME ALP-ALP-LAND_USE	REV. NO.	
DRAWN BY		
REVIEWED BY		
SCALE AS SHOWN		

C2
 SHEET --- OF 35



LEGEND:

- 1 PROPERTIES ACQUIRED IN FEE BY COUNTY OF ALBANY AND/OR ALBANY COUNTY AIRPORT AUTHORITY
- 46E EASEMENTS ACQUIRED BY COUNTY OF ALBANY AND/OR ALBANY COUNTY AIRPORT AUTHORITY
- 57C PROPERTIES CONVEYED IN FEE BY COUNTY OF ALBANY AND/OR ALBANY COUNTY AIRPORT AUTHORITY
- 6.3CE EASEMENTS CONVEYED BY COUNTY OF ALBANY OR ON PROPERTY OWNED BY COUNTY OF ALBANY AND/OR ALBANY COUNTY AIRPORT AUTHORITY
- 7.3R RESTRICTIVE COVENANTS ACQUIRED BY COUNTY OF ALBANY AND/OR ALBANY COUNTY AIRPORT AUTHORITY

MAGNETIC DECLINATION 13° 11' W
± 0.23"
CHANGING BY 0' 3" E ANNUALLY
(NOAA, FEB 2022)

GRAPHIC SCALE (FEET)
0 250 500 1000

MATCHLINE - SEE THIS SHEET



File: V:\PROJECTS\ALBANY\041007\0001_09_DISP\DRAWINGS\01_SHEETS\ALB-APP-FM001-A.DWG
 Sheet: 9/28/2023 5:16:47 PM PlotSize: 9.25x20.25 4.25x5.50 Current User: Kaithe_Cain User: Kaithe_Cain

NO	DATE	REVISION	BY	CHK	APPR.	NO	DATE	REVISION	BY	CHK	APPR.
1		PROP_PROPERTY_ACQUISITION	CHA	CHA	CHA						

CHA
 CHA Consulting, Inc.
 III Winners Circle
 Albany, New York 12205
 (518)-453-4500
 www.chaconsulting.com



PROJECT NAME
 AIRPORT LAYOUT PLAN
 SHEET TITLE
 EXHIBIT A

DRAFT

JOB NO.	61207	DATE	XX 2022
FILE NAME	ALB-APP-EXHIBIT-A	REV. NO.	
DESIGNED BY			
DRAWN BY			
REVIEWED BY			
SCALE	AS SHOWN		

C2
 SHEET 6 OF 35

PARCEL NO.	GRANTOR	GRANTEE	DEED DATE	RECORDED	AREA (AC. +/-)	REMARKS
1	CITY OF ALBANY	COUNTY OF ALBANY	OCT. 10, 1960	L 1664 P 229	682.0	PORTION OF SOUTHWEST CORNER OF THIS PARCEL CURRENTLY LEASED TO ENCEL FOR AGRICULTURAL PURPOSES.
2	THOMAS B. BERGAN	COUNTY OF ALBANY	DEC. 22, 1925	L 768 P 394	8.9	PORTION OF DEED
3	PHILIP C. AND MARY A. VEDDER	COUNTY OF ALBANY	FEB. 21, 1961	L 1675 P 473	1.2	
4	JOSEPH C. AND JULIE VANWINKLE	COUNTY OF ALBANY	FEB. 27, 1961	L 1676 P 167	4.0	
5	ROSE, ELIZABETH, ANNA, LOUISE AND THERESA RUFF	COUNTY OF ALBANY	MAR. 1, 1961	L 1676 P 371	18.0	
6	GRACE GUINAN	COUNTY OF ALBANY	APR. 5, 1961	L 1679 P 211	2.0	
7	CITY OF ALBANY	COUNTY OF ALBANY	MAY. 12, 1961	L 1682 P 421	0.5	
8	DAVID J. AND ROSE A. ROBILLOARD	COUNTY OF ALBANY	MAY. 23, 1961	L 1683 P 391	0.9	
9	RAYMOND SCHULTZ	COUNTY OF ALBANY	DEC. 14, 1964	L 1816 P 183	7.3	
10	PAUL F. PEETS	COUNTY OF ALBANY	JUL. 13, 1966	L 1875 P 183	9.4	
11	E. WALTER ENGEL	COUNTY OF ALBANY	JUL. 15, 1966	L 1875 P 237	5.6	PORTION OF THIS PARCEL CURRENTLY LEASED TO ENCEL FOR AGRICULTURAL PURPOSES
12	THEODORE W. AND MARJORIE M. PRINCE	COUNTY OF ALBANY	AUG. 14, 1973	L 2069 P 271	1.3	
13	LOUISA B. HELLWIG	COUNTY OF ALBANY	SEP. 6, 1974	L 2087 P 223	1.0	
14	JOHN F.A. AND LOUISA B. HELLWIG	COUNTY OF ALBANY	APR. 10, 1974	L 2079 P 775	3.1	SEE PARCEL NO. 57C
15	COUNCIL COMMERCE CORPORATION	COUNTY OF ALBANY	NOV. 24, 1975	L 2109 P 215	6.2	
16	CONN REALTY CORPORATION	COUNTY OF ALBANY	DEC. 30, 1977	L 2143 P 1061	0.3	LAND SWAP; SEE PARCEL NO. 58C
17	JOHN J. AND ELIZABETH ANN HUBAN	COUNTY OF ALBANY	JUN. 20, 1979	L 2171 P 407	0.6	
18	CATHERINE M. FISH	COUNTY OF ALBANY	FEB. 3, 1980	L 2183 P 309	6.1	
19	TOWN OF COLONIE	COUNTY OF ALBANY	MAR. 18, 1980	L 2183 P 309	6.1	
20	TOWN OF COLONIE	COUNTY OF ALBANY	MAR. 18, 1980	L 2185 P 1149	6.8	CORRECTIVE DEED - 2083 / 337
21	ROBERT W., SR AND CATHERINE S. HACKEL	COUNTY OF ALBANY	MAY. 29, 1981	L 2206 P 317	0.3	F.A.A. NOISE ABATEMENT GRANT, FEDERAL PROJ. NO. 6-36-0001-09
22	ROBERT W. HACKEL	COUNTY OF ALBANY	MAY. 29, 1981	L 2206 P 319	0.4	F.A.A. NOISE ABATEMENT GRANT, FEDERAL PROJ. NO. 6-36-0001-09
23	HONIGBAUM'S, INC., ET AL.	COUNTY OF ALBANY	OCT. 1, 1981	L 2195 P 1075	4.7	ACQUIRED BY EMINENT DOMAIN, COURT RECORDS INDEX NO. 8891-81. F.A.A. NOISE ABATEMENT GRANT; FED. PROJ. NO. 6-36-0001-09. ALSO, PREV. AVIGATION EASEMENT L 1643 P 481
24	CAROLINE B. KNAPP	COUNTY OF ALBANY	OCT. 7, 1981	L 2213 P 839	1.0	F.A.A. NOISE ABATEMENT GRANT; FEDERAL PROJ. NO. 6-36-0001-09
25	HELMUT L. AND GLORIA SALISBURY SCHMIDEL	COUNTY OF ALBANY	JUL. 14, 1982	L 2225 P 701	4.0	F.A.A. NOISE ABATEMENT GRANT; FEDERAL PROJ. NO. 6-36-0001-09
26	ESTATE OF IRVING I. BURHMASTER	COUNTY OF ALBANY	SEP. 28, 1983	L 2247 P 157	3.5	F.A.A. NOISE ABATEMENT GRANT; FEDERAL PROJ. NO. 6-36-0001-09
27	JULIE VAN WINKLE	COUNTY OF ALBANY	JAN. 9, 1984	L 2257 P 479	0.5	F.A.A. NOISE ABATEMENT GRANT; FEDERAL PROJ. NO. 6-36-0001-09
28	W. GLEN AND MARGARET A. BALDWIN	COUNTY OF ALBANY	JAN. 4, 1985	L 2276 P 403	1.0	F.A.A. NOISE ABATEMENT GRANT; FEDERAL PROJ. NO. 6-36-0001-09
29	MICHAEL J. GERRY AND OTHERS	COUNTY OF ALBANY	JUN. 28, 1985	L 2276 P 403	0.3	F.A.A. NOISE ABATEMENT GRANT; FEDERAL PROJ. NO. 6-36-0001-04-84
30	MARY BEER	COUNTY OF ALBANY	NOV. 25, 1985	L 2297 P 865	0.4	F.A.A. NOISE ABATEMENT GRANT; FEDERAL PROJ. NO. 6-36-0001-04-84
31	HARRY M. KELLY AND RUTH C. BARBADALLO	COUNTY OF ALBANY	JAN. 29, 1986	L 2303 P 159	0.3	F.A.A. NOISE ABATEMENT GRANT; FEDERAL PROJ. NO. 6-36-0001-04-84
32	JOHN E. AND THEA M. GRAHAM	COUNTY OF ALBANY	MAR. 5, 1986	L 2305 P 309	0.5	F.A.A. NOISE ABATEMENT GRANT; FEDERAL PROJ. NO. 6-36-0001-04-84
33	FOSTER C. AND DOROTHY A. DODDLE	COUNTY OF ALBANY	APR. 9, 1986	L 2308 P 123	0.5	F.A.A. NOISE ABATEMENT GRANT; FEDERAL PROJ. NO. 6-36-0001-07-85
34	DR. BASAVARAJA DREKONDI	COUNTY OF ALBANY	OCT. 1, 1986	L 2322 P 565	0.4	F.A.A. NOISE ABATEMENT GRANT; FEDERAL PROJ. NO. 6-36-0001-09
35	ALBANY COUNTY DA AND COMMAND AIRWAYS, INC.	COUNTY OF ALBANY	NOV. 20, 1986	L 2335 P 729	0.7	
36	TIMOTHY FREDERICK	COUNTY OF ALBANY	DEC. 31, 1986	L 2328 P 832	0.1	F.A.A. NOISE ABATEMENT GRANT; FEDERAL PROJ. NO. 6-36-0001-04-84
37	JAMES T. AND LISA A. HOFFMAN	COUNTY OF ALBANY	JUN. 15, 1990	L 2417 P 285	0.3	F.A.A. NOISE ABATEMENT GRANT; FEDERAL PROJ. NO. 6-36-0001-04-84
38	SCOTT A. AND JANET L. McCLLOUD	COUNTY OF ALBANY	JUL. 17, 1990	L 2419 P 593	0.6	F.A.A. NOISE ABATEMENT GRANT; FEDERAL PROJ. NO. 6-36-0001-04-84
39	HERBERT AND PATRICIA E. LECHMAN	COUNTY OF ALBANY	SEP. 20, 1990	L 2423 P 721	0.7	F.A.A. NOISE ABATEMENT GRANT; FEDERAL PROJ. NO. 6-36-0001-09
40	LORENZINA MASTROIANI	COUNTY OF ALBANY	SEP. 21, 1990	L 2423 P 855	0.4	F.A.A. NOISE ABATEMENT GRANT; FEDERAL PROJ. NO. 6-36-0001-04-84
41	VIVIAN PAIGE	COUNTY OF ALBANY	NOV. 26, 1990	L 2425 P 1053	0.8	F.A.A. NOISE ABATEMENT GRANT; FEDERAL PROJ. NO. 6-36-0001-09
42	FRANK A. AND DOREEN L. VALCOK	COUNTY OF ALBANY	OCT. 27, 1990	L 2427 P 847	0.5	F.A.A. NOISE ABATEMENT GRANT; FEDERAL PROJ. NO. 6-36-0001-04-84
43	TOH MING LY AND GAO QING WANG	COUNTY OF ALBANY	NOV. 30, 1990	L 2427 P 1105	0.6	F.A.A. NOISE ABATEMENT GRANT; FEDERAL PROJ. NO. 6-36-0001-04-84
44	DAVID JESMAN	COUNTY OF ALBANY	DEC. 12, 1990	L 2437 P 1105	0.6	F.A.A. NOISE ABATEMENT GRANT; FEDERAL PROJ. NO. 6-36-0001-04-84
45	BODTH W. AND DALE M. UPTON	COUNTY OF ALBANY	JAN. 25, 1991	L 2431 P 335	0.3	F.A.A. NOISE ABATEMENT GRANT; FEDERAL PROJ. NO. 6-36-0001-04-84
46E	HAVELOCK AND LILLIE PRIMETT	CITY OF ALBANY	MAY. 1, 1940	L 915 P 416	0.4	CLEARANCE EASEMENT
47E	SHAKER RIDGE COUNTRY CLUB, INC.	CITY OF ALBANY	DEC. 28, 1951	L 1296 P 176	107.5	AVIGATION EASEMENT 33: 1 PLANE
48E	VERDYO VOLUNTEER FIRE ASSOCIATION, INC.	CITY OF ALBANY	APR. 4, 1960	L 1645 P 197	7.8	AVIGATION EASEMENT; MINIMUM HEIGHT RESTRICTIONS APPLY
49E	JOSEPH C. AND JULIE VANWINKLE	COUNTY OF ALBANY	FEB. 27, 1961	L 1676 P 161	1.5	AVIGATION EASEMENT; MINIMUM HEIGHT RESTRICTIONS APPLY
50E	WILLIAM H. REBUSMEN	COUNTY OF ALBANY	OCT. 2, 1961	L 1700 P 48	17.0	AVIGATION EASEMENT; MINIMUM HEIGHT RESTRICTIONS APPLY
51E	E. WALTER AND ELIZABETH ENGEL	COUNTY OF ALBANY	JUL. 15, 1966	L 1875 P 371	27.8	AVIGATION EASEMENT; MINIMUM HEIGHT RESTRICTIONS APPLY
52E	TRI - CITY INDUSTRIES, INC.	COUNTY OF ALBANY	JAN. 6, 1975	L 2093 P 79	97.1	AIR EASEMENT; MINIMUM HEIGHT RESTRICTIONS APPLY. ALSO SEE PARCEL NO. 68CE
53E	COUNCIL COMMERCE CORPORATION	COUNTY OF ALBANY	OCT. 17, 1975	L 2109 P 267	0.3	AIR EASEMENT; MINIMUM HEIGHT RESTRICTIONS APPLY
54E	JAMES W. AND HELEN COTON	COUNTY OF ALBANY	DEC. 7, 1979	L 2180 P 922	50.0	AIR EASEMENT; MINIMUM HEIGHT RESTRICTIONS APPLY; EXCHANGE OF EASEMENTS; SEE PARCEL NO. 69CE
55E	ESTATE OF IRVING F. BURHMASTER	COUNTY OF ALBANY	SEP. 28, 1983	L 2247 P 179	81.0	AIR EASEMENT; MINIMUM HEIGHT RESTRICTIONS APPLY
56E	ASHFIELD ASSOCIATES	COUNTY OF ALBANY	DEC. 10, 1990	L 2428 P 969	3.0	30' WIDE EASEMENT FOR WASTE GLYCOL SEWER MAIN
57C	COUNTY OF ALBANY	JOHN F.A. AND LOUISE B. HELLWIG	APR. 3, 1975	L 2096 P 145	0.8	LAND SWAP; SEE PARCEL NO. 17
58C	COUNTY OF ALBANY	CONN REALTY CORPORATION	DEC. 20, 1977	L 2143 P 1119	0.3	LAND SWAP; SEE PARCEL NO. 17
59C	COUNTY OF ALBANY	TOWN OF COLONIE	APR. 2, 1980	L 2145 P 1105	0.6	SEE PARCEL NO. 70CE
60C	COUNTY OF ALBANY	PEPSI-COLA ALBANY BOTTLING CO., INC.	NOV. 2, 1982	L 2230 P 1035	4.8	SUBJECT TO RESTRICTIVE COVENANTS; ALSO, SEE PARCEL NO. 69CE
61C	COUNTY OF ALBANY	THE PEOPLE OF THE STATE OF NEW YORK	AUG. 27, 1984	L 2268 P 193	3.6	SUBJECT TO RIGHTS OF REVERTER TO COUNTY OF ALBANY
62C	COUNTY OF ALBANY	COMMAND AIRWAYS, INC.	OCT. 30, 1986	L 2335 P 723	0.4	SEE PARCEL NO. 71CE
63CE	COUNTY OF ALBANY	NIAGARA MOHAWK POWER CORP.	DEC. 13, 1965	L 1858 P 341		10' WIDE RIGHT OF WAY AND EASEMENT FOR GAS MAIN
64CE	LOUISA B. AND JOHN F.A. HELLWIG	TOWN OF COLONIE	NOV. 19, 1973	L 2062 P 267		SANITARY SEWER EASEMENT
65CE	COUNTY OF ALBANY	TOWN OF COLONIE	DEC. 3, 1973	L 2075 P 263		SANITARY SEWER EASEMENT
66CE	COUNTY OF ALBANY	TOWN OF COLONIE	DEC. 3, 1973	L 2075 P 266		SANITARY SEWER EASEMENT
67CE	COUNTY OF ALBANY	TOWN OF COLONIE	DEC. 3, 1973	L 2075 P 323		SANITARY SEWER EASEMENT
68CE	COUNTY OF ALBANY	TRI-CITY INDUSTRIES, INC.	JAN. 6, 1975	L 2093 P 79		EASEMENT AND RIGHT OF WAY FOR INGRESS, EGRESS AND UTILITIES INSTALLATION. ALSO, SEE PARCEL NO. 52E
70CE	COUNTY OF ALBANY	TOWN OF COLONIE	APR. 2, 1980	L 2185 P 1153		PROTECTIVE EASEMENT AND WATER MAIN EASEMENT; ALSO, SEE PARCEL 59C
71CE	COUNTY OF ALBANY	COMMAND AIRWAYS, INC.	OCT. 30, 1986	L 2335 P 723		DRAINAGE EASEMENT AND RIGHT TO CLEAR EXISTING DITCH FOR DRAINAGE; ALSO, SEE PARCEL 62C
72CE	COUNTY OF ALBANY	TOWN OF COLONIE	OCT. 26, 1990	L 2427 P 79		WATER MAIN EASEMENT
73R	COUNCIL COMMERCE CORPORATION	COUNTY OF ALBANY	NOV. 24, 1975	L 2109 P 221		RESTRICTIVE COVENANTS ON THIS PARCEL CONCERNING AIR AND NOISE POLLUTION
74	EUGENE P. DEJONGE CO. TRUST FOR THE COUNTY OF ALBANY	COUNTY OF ALBANY	SEP. 14, 1966	L 1883 P 51	0.9	FORMERLY OWNED BY DAVID HARGREAVES. ALBANY COUNTY FORECLOSED FOR DELINQUENT TAXES. JURISDICTION REPUTEDLY TRANSFERRED FROM ALBANY CO. REAL PROPERTY TO ALBANY CO. AIRPORT FEB. 1987.
75	RONALD A. MINCH AND LEATRICE H. FONG	COUNTY OF ALBANY	OCT. 10, 1991	L 2446 P 574		8.03-1-53
76	DOUGLAS H. & DOROTHY R. CAD	COUNTY OF ALBANY	SEP. 19, 1991	L 2445 P 33		8.03-1-52
77	SACHA F. PERCENT	COUNTY OF ALBANY	JUN. 29, 1993	L 2486 P 501		18.00-2-20
78	JACK C.F. JANG	COUNTY OF ALBANY	MAR. 22, 1991	L 2434 P 241		18.00-2-16
79	YVONNE SGAMBELLURI	COUNTY OF ALBANY	SEP. 2, 1993	L 2491 P 669		18.00-2-16
80CE	COUNTY OF ALBANY	N.Y. POWER & LIGHT CO.	MAY. 17, 1928	L 811 P 74		PARCEL 2 / ELEC LINE ESMT.
81CE	LOUIS & ANNA SCHULTZ	N.Y. POWER & LIGHT CO.	APR. 11, 1929	L 813 P 275		PARCEL 9 / ELEC LINE ESMT.
82CE	LOUIS & ANNA SCHULTZ	N.Y. POWER & LIGHT CO.	APR. 23, 1929	L 825 P 220		PARCEL 17 / ELEC LINE ESMT.
83CE	LOUIS & ANNA SCHULTZ	N.Y. POWER & LIGHT CO.	MAR. 18, 1930	L 825 P 407		PARCEL 9 / ELEC LINE ESMT.
84CE	ROBERT P. KELLY	N.Y. POWER & LIGHT CO.	SEP. 25, 1934	L 871 P 227		PARCEL 1 - 50 PINEGROVE / ELEC LINE ESMT.
85CE	JOHN W. HELLWIG	N.Y. POWER & LIGHT CO.	SEP. 5, 1935	L 873 P 367		PARCEL 15 / ELEC LINE ESMT.
86CE	HARVEY S. & TILLIE H. BAUMES	N.Y. POWER & LIGHT CO.	JAN. 9, 1942	L 938 P 359		PARCEL 14 / ELEC LINE ESMT.
87CE	KATHERINE X. RUF	N.Y. POWER & LIGHT CO.	JUN. 10, 1942	L 938 P 361		PARCEL 1 / ELEC LINE ESMT.
88CE	HARVEY S. & TILLIE H. BAUMES	N.Y. POWER & LIGHT CO.	DEC. 28, 1951	L 1296 P 75		PARCEL 1 / ELEC LINE ESMT.
89CE	JOHN HELLWIG	N.Y. POWER & LIGHT CO.	DEC. 21, 1951	L 1300 P 103		PARCEL 15 / TEL LINE ESMT.
90CE	FRANCIS L. LOGAN	N.Y. TELEPHONE CO.	MAY. 13, 1960	L 1659 P 217		PARCEL 1 / U/G TEL ESMT.
91CE	WILLIAM H. REBUSMEN	LATHAM WATER DISTRICT	AUG. 8, 1961	L 1662 P 331		PARCEL 50 / WATERLINE ESMT.
92CE	COUNTY OF ALBANY	NIAGARA MOHAWK POWER CORP.	JUN. 14, 1966	L 1868 P 337		PARCEL 47E / GAS LINE ESMT.
93CE	COUNTY OF ALBANY	CITY OF WATERLOO	AUG. 10, 1968	L 1878 P 313		PARCEL 1 / WATER LINE ESMT.
94CE	THEODORE A. MARJORIE PRINCE	NIAGARA MOHAWK POWER CORP.	OCT. 29, 1968	L 1958 P 213		PARCEL 12 / GAS LINE ESMT.
95CE	JAMES RADLEY	N.Y. TELEPHONE CO.	AUG. 4, 1969	L 1983 P 195		PARCEL 23 / U/G TELEPHONE ESMT.
96CE	A.H. HARRIS & SONS, INC.	N.Y. TELEPHONE CO.	JUL. 1, 1970	L 2013 P 18		PARCEL 35 / U/G TELEPHONE ESMT.
97CE	THEODORE M. & MARJORIE M. PENCZYK	TOWN OF COLONIE	MAY. 11, 1973	L 2063 P 817		PARCEL 12 / SEWER LINE ESMT.
98CE	COUNTY OF ALBANY	ANNA, LOUISE, & THERESA RUF	JUL. 12, 1974	L 2084 P 335		PARCEL 59C / RESERVES INGRESS/EGRESS ESMT.
99CE	YVONNE SGAMBELLURI	TOWN OF COLONIE	JUL. 21, 1975	L 2101 P 199		PARCEL 79 / SEWER LINE ESMT.
100CE	COUNTY OF ALBANY	NIAGARA MOHAWK POWER CORP.	JAN. 5, 1977	L 2125 P 631		ANN LEE PROP. / U/G ELEC ESMT.
101CE	COUNTY OF ALBANY	TOWN OF COLONIE	JAN. 19, 1977	L 2126 P 317		ALBANY-SHAKER RD. / WATER ESMT.
102CE	COUNTY OF ALBANY	NIAGARA MOHAWK POWER CORP.	FEB. 15, 1977	L 2127 P 245		PARCEL 2 / ALBANY-SHAKER WEST OF AIRPORT / ELEC LINE ESMT.
103	TURB CONSTRUCTION CO. INC.	COUNTY OF ALBANY	APR. 11, 1977	L 2129 P 1159		16.00-4-61
104CE	JOSEPH WUNDERLICH	TOWN OF COLONIE	NOV. 4, 1977	L 2140 P 1087		PARCEL 29 / SEWER
105CE	FRANK MARCUS	NIAGARA MOHAWK & N.Y. TELEPHONE	NOV. 25, 1977	L 2142 P 63		PARCELS 18,17 / U/G ELEC ESMT.
106CE	KENNETH A. & BARBARA R. REBUSMEN	TOWN OF COLONIE	JUN. 7, 1978	L 2150 P 1059		PARCEL 50C / WATER ESMT.
107E	JOHN J. & ELIZABETH A. HUBAN	COUNTY OF ALBANY	JUN. 28, 1979	L 2171 P 445		18.00-4-20.1 / AIR ESMT.
108E	COUNTY OF ALBANY	WARREN SCHULTZ	DEC. 6, 1979	L 2180 P 229		RELEASE AIR ESMT
109E	COUNTY OF ALBANY	JAMES W. COTON	DEC. 18, 1979	L 2180 P 879		18.02-6-63.2
110C	COUNTY OF ALBANY	PEOPLE OF THE STATE OF NEW YORK	AUG. 8, 1990	L 2422 P 76		PARCEL 27
111C	COUNTY OF ALBANY	PEOPLE OF THE STATE OF NEW YORK	SEP. 7, 1990	L 2422 P 936		PARCEL 2
112CE	COUNTY OF ALBANY	NIAGARA MOHAWK & N.Y. TELEPHONE	OCT. 24, 1984	L 2270 P 636		PARCEL 1 / U/G ELEC & TEL TO MALL AIR
113CE	COUNTY OF ALBANY	COMMAND AIRWAYS INC.	DEC. 20, 1984	L 2274 P 839		PARCEL 1 / TAXIWAY - R.O.W. ESMT
114CE	COUNTY OF ALBANY	NIAGARA MOHAWK & N.Y. TELEPHONE	MAY 27, 1987	L 2338 P 135		PARCEL 1 / U/G TEL, ELEC & GAS ESMT.
115	SHAKER RIDGE COUNTRY CLUB, INC.	COUNTY OF ALBANY	OCT. 4, 1988	L 2374 P 293		RESERVES INGRESS/EGRESS ESMT & WATER LINE ESMT
116CE	COUNTY OF ALBANY	NIAGARA MOHAWK & N.Y. TELEPHONE	MAY 8, 1989	L 2385 P 973		PARCEL 1 / U/G ELEC, TEL & GAS ESMT.
117	JAMES J. & SUZZANNE RUTKOWSKI	COUNTY OF ALBANY	JUN. 12, 1991	L 2438 P 1057		18.00-3-20
118CE	COUNTY OF ALBANY	TOWN OF COLONIE	JUL. 22, 1991	L 2441 P 260		PARCEL 25 / SEWER LINE ESMT.
119CE	COUNTY OF ALBANY					

PARCEL NO.	GRANTOR	GRANTEE	DEED DATE	RECORDED	AREA (AC. +/-)	REMARKS
243	ANDREW S. EMPIE	ALBANY COUNTY AIRPORT AUTHORITY	MAR. 20, 2006	L 2818 P 395	0.80	8.03-1-56
244	GENERAL STEEL FABRICATORS, INC.	ALBANY COUNTY AIRPORT AUTHORITY	JUN. 15, 2005	L 2804 P 773	12.90	30.00-3-21 & 30.00-3-38
245	GENERAL STEEL FABRICATORS, INC.	ALBANY COUNTY AIRPORT AUTHORITY	JUN. 15, 2005	L 2804 P 777	0.10	30.00-3-36
246	ALBANY COUNTY AIRPORT AUTHORITY	COUNTY OF ALBANY	JUL. 13, 2005	L 2808 P 584	24.00	LANDS TO BE INCLUDED IN AIRPORT LEASE AGREEMENT / OLD ALBANY SHAKER ROAD & ALBANY-SHAKER ROAD
247	TOWN OF COLONIE	ALBANY COUNTY AIRPORT AUTHORITY	OCT. 11, 2006	L 2819 P 1090	1.10	30.00-3-79 (PORTION OF FORMER WATERKLUET-SHAKER ROAD)
248E	FALLON REALTY, LLC	ALBANY COUNTY AIRPORT AUTHORITY	APR. 21, 2006	L 2843 P 350	1.60	8.03-1-48.21 / AVIGATION EASEMENT
249	FALLON REALTY, LLC	ALBANY COUNTY AIRPORT AUTHORITY	APR. 21, 2006	L 2843 P 355	1.60	8.03-1-48.22
250E	INTERMAGNETIC GENERAL CORPORATION	ALBANY COUNTY AIRPORT AUTHORITY	AUG. 17, 2007	L 2857 P 1085	7.00	PORTION OF 18.00-3-24.2 / AVIGATION EASEMENT
251	MARTHA E. JONES	ALBANY COUNTY AIRPORT AUTHORITY	APR. 17, 2007	L 2882 P 1153	0.40	18.00-2-15
252	TOWN OF COLONIE	ALBANY COUNTY AIRPORT AUTHORITY	DEC. 7, 2007	L 2906 P 74	8.40	8.03-1-59
253	JENNIFER A. NEIL	ALBANY COUNTY AIRPORT AUTHORITY	JAN. 14, 2008	L 2908 P 756	1.10	08.03-1-47
253E	JENNIFER A. NEIL	ALBANY COUNTY AIRPORT AUTHORITY	JAN. 14, 2008	L 2908 P 756	1.10	08.03-1-47 / AVIGATION EASEMENT
254E	JENNIFER A. NEIL	ALBANY COUNTY AIRPORT AUTHORITY	JAN. 14, 2008	L 2908 P 756	0.50	08.03-1-47 / CONSERVATION EASEMENT
255	JENNIFER A. NEIL	ALBANY COUNTY AIRPORT AUTHORITY	JAN. 14, 2008	L 2911 P 164	0.60	08.03-1-50
256	NITA BUDLONG	ALBANY COUNTY AIRPORT AUTHORITY	MAR. 25, 2008	L 2916 P 728	12	18.00-3-23, 18.00-3-24.1 & 18.00-3-26
257	PAUL C. & NANCY RUSSELL	ALBANY COUNTY AIRPORT AUTHORITY	MAY 8, 2008	L 2919 P 836	7.80	08.03-1-58.2 (PORTION OF FORMER 08.03-1-58)
258	ALBANY COUNTY AIRPORT AUTHORITY	PAUL C. & NANCY RUSSELL	MAY 5, 2008	L 2919 P 717	8.40	08.03-1-58.1 (FORMERLY 08.03-1-59)
259	ALBANY COUNTY AIRPORT AUTHORITY	PAUL C. & NANCY RUSSELL	MAY 5, 2008	L 2919 P 717	1.10	08.03-1-58.1 (FORMERLY 08.03-1-11)
260E	PAUL C. & NANCY RUSSELL	ALBANY COUNTY AIRPORT AUTHORITY	MAY 8, 2008	L 2919 P 754	16.70	08.03-1-58.1 / AVIGATION EASEMENT (PROPOSED)
261E	WINN LTD. - MARK FLEISCHER, G.M.	ALBANY COUNTY AIRPORT AUTHORITY			4.00	18.00-1-43.32 / AVIGATION EASEMENT (PROPOSED)
262E	BRITISH AMERICAN, LLC	ALBANY COUNTY AIRPORT AUTHORITY			42.80	18.00-1-43.31 / AVIGATION EASEMENT (PROPOSED)
263E	SHAKER RIDGE COUNTY CLUB, INC.	ALBANY COUNTY AIRPORT AUTHORITY			170.60	18.00-1-43.1 / AVIGATION EASEMENT (PROPOSED)
264E	ROSEWOOD SHAKER RIDGE, LLC	ALBANY COUNTY AIRPORT AUTHORITY			17.30	18.00-1-43.23 / AVIGATION EASEMENT (PROPOSED)
265E	BRITISH AMERICAN, LLC	ALBANY COUNTY AIRPORT AUTHORITY			11.00	18.00-1-43.21 / AVIGATION EASEMENT (PROPOSED)
266E	MEMORY GARDENS, INC.	ALBANY COUNTY AIRPORT AUTHORITY			194.30	18.00-1-44 / AVIGATION EASEMENT (PROPOSED)
267E	BOCES	ALBANY COUNTY AIRPORT AUTHORITY			12.90	30.00-1-1 / AVIGATION EASEMENT (PROPOSED)
268E	JOSEPH H. & FRANCES A. SCHMIDT	ALBANY COUNTY AIRPORT AUTHORITY			1.31	17.04-2-9 / AVIGATION EASEMENT (PROPOSED)
269E	SUSAN A. LANZA	ALBANY COUNTY AIRPORT AUTHORITY			0.80	17.04-2-10 / AVIGATION EASEMENT (PROPOSED)
270E	MICHAEL S. CERONE	ALBANY COUNTY AIRPORT AUTHORITY			0.70	17.04-2-17.1 / AVIGATION EASEMENT (PROPOSED)
271E	MARIA A. GPOAL SISTLA	ALBANY COUNTY AIRPORT AUTHORITY			0.30	17.04-2-18 / AVIGATION EASEMENT (PROPOSED)
272E	JOHN G. POTRYALA, JR.	ALBANY COUNTY AIRPORT AUTHORITY			0.40	17.04-2-19 / AVIGATION EASEMENT (PROPOSED)
273E	LEONARD F. & FRANCES G. IVESON	ALBANY COUNTY AIRPORT AUTHORITY			0.40	17.04-2-20 / AVIGATION EASEMENT (PROPOSED)
274E	WILLIAM J. & JEANNE B. KELLEY	ALBANY COUNTY AIRPORT AUTHORITY			0.40	17.04-2-21 / AVIGATION EASEMENT (PROPOSED)
275E	STEPHEN & BARBARA QUAY	ALBANY COUNTY AIRPORT AUTHORITY			0.40	17.04-2-22 / AVIGATION EASEMENT (PROPOSED)
276E	ANNE P. CALLOWAY & PETER E. PALMER	ALBANY COUNTY AIRPORT AUTHORITY			2.90	17.04-2-33.1 / AVIGATION EASEMENT (PROPOSED)
277E	MICHAEL M. MASTROPIETRO	ALBANY COUNTY AIRPORT AUTHORITY			0.40	17.04-2-45 / AVIGATION EASEMENT (PROPOSED)
278E	RONALD T. & SHIRLEY NEWTON PHILLIPS	ALBANY COUNTY AIRPORT AUTHORITY			0.40	17.04-2-48 / AVIGATION EASEMENT (PROPOSED)
279E	GREGORY G. & KATHLEEN M. CHUDZINSKI	ALBANY COUNTY AIRPORT AUTHORITY			0.30	17.04-2-49 / AVIGATION EASEMENT (PROPOSED)
280E	CRAIG & BARBARA PAULSON AND EVELYN POWERS	ALBANY COUNTY AIRPORT AUTHORITY			0.40	17.04-10-15 / AVIGATION EASEMENT (PROPOSED)
281E	PATRICK J. BOLGONA	ALBANY COUNTY AIRPORT AUTHORITY			0.80	17.04-10-16 / AVIGATION EASEMENT (PROPOSED)
282E	TERRENCE W. & BARBARA J. SHIELDS	ALBANY COUNTY AIRPORT AUTHORITY			0.50	17.04-10-17 / AVIGATION EASEMENT (PROPOSED)
283E	MARK A. & ROBIN J. GREENE	ALBANY COUNTY AIRPORT AUTHORITY			0.40	17.04-10-18 / AVIGATION EASEMENT (PROPOSED)
284E	MORINAGA & KIYOMI KAZUNOBO	ALBANY COUNTY AIRPORT AUTHORITY			0.40	17.04-10-19 / AVIGATION EASEMENT (PROPOSED)
285E	JAMES R., JR. & MAUREEN A. KELLY	ALBANY COUNTY AIRPORT AUTHORITY			0.40	17.04-10-23 / AVIGATION EASEMENT (PROPOSED)
286E	RONALD E. RANELUCCI & MARY C. BARTON	ALBANY COUNTY AIRPORT AUTHORITY			0.40	17.04-10-23 / AVIGATION EASEMENT (PROPOSED)
287E	LUIGI & MARIA S. DENITTO	ALBANY COUNTY AIRPORT AUTHORITY			0.50	17.04-10-25 / AVIGATION EASEMENT (PROPOSED)
288E	CHARLES DAVID & ROSEMARIE S. SCRODANUS	ALBANY COUNTY AIRPORT AUTHORITY			0.80	17.04-10-26 / AVIGATION EASEMENT (PROPOSED)
289E	FRED C. SPAGNOLA & MARY C. ZORBE	ALBANY COUNTY AIRPORT AUTHORITY			0.60	17.04-10-27 / AVIGATION EASEMENT (PROPOSED)
290E	PATRICIA E. FUSCO	ALBANY COUNTY AIRPORT AUTHORITY			0.40	17.04-10-28 / AVIGATION EASEMENT (PROPOSED)
291	SHAKER RIDGE COUNTY CLUB, INC.	ALBANY COUNTY AIRPORT AUTHORITY	OCT. 3, 2009	L 2933 P 599	4.20	18.00-1-43.4
292E	COUNTY OF ALBANY	ALBANY COUNTY AIRPORT AUTHORITY	FEB. 17, 2005	L 2919 P 541		SANITARY SEWER EASEMENT (ANN LEE HOME)
293	GUPTIL HOLDING CORPORATION	ALBANY COUNTY AIRPORT AUTHORITY	JUN. 5, 2008	L 2932 P 786	0.8	19.03-1-30
294	ALBANY CO. DEPT. OF MANAGEMENT & PROPERTIES INC.	ALBANY COUNTY AIRPORT AUTHORITY	FEB. 28, 2011	L 3003 P 858		30.00-5-3 / 696 ALBANY SHAKER ROAD
295	698 SHAKER ROAD LLC & NALA PROPERTIES INC.	ALBANY COUNTY AIRPORT AUTHORITY	MAY 24, 2011	L 3006 P 67	0.2	30.00-5-2 / 698 ALBANY SHAKER ROAD
296	JEFFREY BUHRMASTER	ALBANY COUNTY AIRPORT AUTHORITY	FEB. 23, 2011	L 2999 P 1008	1.8	08.03-1-66 / 9 BUHRMASTER ROAD
297	GEORGE F. BUHRMASTER	ALBANY COUNTY AIRPORT AUTHORITY	MAR. 4, 2011	L 3002 P 401	1.4	08.03-1-65 / 15 BUHRMASTER ROAD (WITH LIFE ESTATE) CORRECTIVE DEED L 3039 P 558
298	GEORGE E. LONGHURST	ALBANY COUNTY AIRPORT AUTHORITY			1.4	08.03-1-62 / 29 BUHRMASTER ROAD (PENDING NOISE ACQUISITION)
299	PAUL & JEANNE PEZZULO	ALBANY COUNTY AIRPORT AUTHORITY			2.3	08.03-1-61 / 27 BUHRMASTER ROAD (PENDING NOISE ACQUISITION)
300	STANLEY B. & PATRICIA A. HICKS	ALBANY COUNTY AIRPORT AUTHORITY				18.00-3-19 / 6 KELLY ROAD (PENDING NOISE ACQUISITION)
301	GEORGE F. & JEFFREY G. BUHRMASTER	ALBANY COUNTY AIRPORT AUTHORITY	MAR. 29, 2011	L 3002 P 396	11.4	PORTION OF 08.40-1-52.1 / 4120 RIVER ROAD
302	FREDERICK P. & YVONNE L. SKYDER	ALBANY COUNTY AIRPORT AUTHORITY				18.00-2-41.1 / 42 SICKER ROAD (PENDING NOISE ACQUISITION)
303	MARGARET K. GIBSON, ET. AL.	ALBANY COUNTY AIRPORT AUTHORITY	FEB. 12, 2010	L 2971 P 862	1.9	18.00-2-11 / 1060 TROY-SCHENECTADY ROAD
304	JOHN K. ENGEL & EDWARD W. ENGEL, II	ALBANY COUNTY AIRPORT AUTHORITY	NOV. 5, 2009	L 2963 P 352	44.4	30.00-5-1 / 682 ALBANY-SHAKER ROAD
305E	MEMORY GARDENS, INC.	ALBANY COUNTY AIRPORT AUTHORITY	NOV. 24, 2010	L 2993 P 819	59.2	PORTION OF 18.00-1-44 / AVIGATION EASEMENT
306L	ALBANY COUNTY AIRPORT AUTHORITY	CELCO PARTNERSHIP	NOV. 29, 2010	L 3000 P 563		LEASE AGREEMENT - WITHIN TERMINAL BUILDING
307	ALBANY COUNTY AIRPORT AUTHORITY	JEFFREY G. & CHRISTINE BUHRMASTER	MAR. 28, 2011	L 3002 P 255		PORTION OF 8.03-1-63
308E	GEORGE & JEFFREY BUHRMASTER	ALBANY COUNTY AIRPORT AUTHORITY	MAR. 4, 2011	L 3002 P 390	19.3	PORTION OF 8.04-1-52.1 / AVIGATION EASEMENT
309	TOWN OF COLONIE	ALBANY COUNTY AIRPORT AUTHORITY	AUG. 11, 2011	L 3012 P 808	1.9	19.14-3-10 / 25 UTICA AVENUE
310CE	ALBANY COUNTY AIRPORT AUTHORITY	TOWN OF COLONIE	AUG. 11, 2011	L 3012 P 808	1.9	19.14-3-10 / UTICA AVENUE / UTILITY EASEMENT
311	ALBANY COUNTY AIRPORT AUTHORITY	388 OLD NISKAYUNA ROAD LLC	OCT. 31, 2011	L 3018 P 159	2.5	18.00-3-51 & 48 / 388 OLD NISKAYUNA ROAD & 172 SICKER ROAD
312E	388 OLD NISKAYUNA ROAD LLC	ALBANY COUNTY AIRPORT AUTHORITY	OCT. 31, 2011	L 3018 P 159	2.5	18.00-3-51 & 58 / AVIGATION EASEMENT
313E	JOHN K. ENGEL & EDWARD W. ENGEL, II	ALBANY COUNTY AIRPORT AUTHORITY	DEC. 18, 2013	L 3086 P 1000	38.46	30.00-3-77 / AVIGATION EASEMENT
314	LATHAM POOL PRODUCTS, INC.	ALBANY COUNTY AIRPORT AUTHORITY	FEB. 3, 2017	INST. R2017-3682	2.226	PORTION OF 30.00-3-13.1 (SEE FOLLOWING NOTE)
NOTE	ALBANY COUNTY AIRPORT AUTHORITY	ALBANY COUNTY AIRPORT AUTHORITY	FEB. 6, 2017	INST. R2017-3683	12.28	PARCEL 314 MERGED WITH PARCEL 220 AND DESIGNATED AS T.M.P. 30.00-3-13.1
315L	COUNTY OF ALBANY	ALBANY COUNTY AIRPORT AUTHORITY	APR. 12, 2017	COUNTY RESOLUTION	3.49	LAND LEASE AMENDMENT NO. 6-SE CORNER - INTERSECTION OF HERITAGE LANE & PETER J. DALESSANDRO BLVD.
316	ALBANY COUNTY AIRPORT AUTHORITY	N.Y.S. DEPARTMENT OF TRANSPORTATION	MAR. 26, 2018		5.911	NOTICE OF APPROPRIATION - MAP NO. 755 R-1, PARCEL NO. 881 RESERVES PRIOR AVIGATION EASEMENT OVER LANDS
317	ALBANY COUNTY AIRPORT AUTHORITY	N.Y.S. DEPARTMENT OF TRANSPORTATION	MAR. 26, 2018		6.061	NOTICE OF APPROPRIATION - MAP NO. 765 R-1, PARCEL NO. 892 RESERVES PRIOR AVIGATION EASEMENT OVER LANDS
318E	THE PEOPLE OF THE STATE OF NEW YORK	ALBANY COUNTY AIRPORT AUTHORITY	OCT. 11, 2018	INST. R2018-25900		PORTION OF 30.00-5-10.2 / AVIGATION EASEMENT IN MAP NO. 768-C PARCEL NO. 895
319E	THE PEOPLE OF THE STATE OF NEW YORK	ALBANY COUNTY AIRPORT AUTHORITY	OCT. 11, 2018	INST. R2018-25901		PORTION OF 30.00-5-4 / AVIGATION EASEMENT IN MAP NO. 749-C PARCEL NO. 875
900	LATHAM WATER DISTRICT	ALBANY COUNTY AIRPORT AUTHORITY	TBD	TBD	3.6	PROPOSED PROPERTY ACQUISITION

△

File: V:\PROJECTS\NY\5104072000_09_05\5104072000\01_SHEETS\ALB-ALP-EXHIBIT-A.DWG
 Saved: 9/26/2023 5:05:55 PM Plotted: 9/26/2023 5:05:01 PM Current User: kumar.ks@cha.com User: kumar.ks@cha.com

NO.	DATE	REVISION	BY	CHK.	APPR.	NO.	DATE	REVISION	BY	CHK.	APPR.
1		PROP_PROPERTY_ACQUISITION	CHA	CHA	CHA						



CHA Consulting, Inc.
 111 Winners Circle
 Albany, New York 12205
 (518)-453-4500
 www.chaconsulting.com



PROJECT NAME
AIRPORT LAYOUT PLAN

DRAFT

SHEET TITLE
EXHIBIT A - TABLE 2

JOB NO.	61207	SHEET	XX 2022	DRAWING NO.
FILE NAME	ALB-ALP-EXHIBIT-A	REV. NO.		
DESIGNED BY				
DRAWN BY				
REVIEWED BY				
SCALE	AS SHOWN			
SHEET				8 OF 35